

BERT | FRANK



BRAACE

BRACE WALL LIGHT

Natural veined alabaster shade 'braced' by brushed brass bobbins. Characterised by symmetrical, geometric details. Designed to cast both a warm wash of light across the wall and illuminate into the room. Suitable for wet areas.



PRODUCT CODE

BRC0020 - Brace Wall Light Small - Brass
 BRC0021 - Brace Wall Light Large - Brass
 BRC0022 - Brace Wall Light Small - Nickel
 BRC0023 - Brace Wall Light Large - Nickel

MATERIALS

Brass, Alabaster

FINISHES

Available in Brushed Brass or Nickel metalwork
 Metalwork lacquered as standard

DIMMING

Mains dimmable / TRIAC

IP RATING

IP44 rated, suitable for wet areas

LIGHT SOURCE

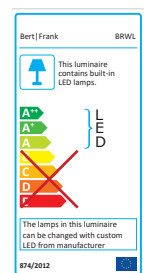
40W Integrated 12V LED
 Inbuilt 120/240V CC LED driver
 2700k

WEIGHT

Large = 4.6kg net, 6.0kg gross
 Small = 2.5kg net, 3.5kg gross

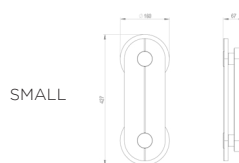
DESIGN NOTES

In the initial sketches Brace started off as an African shield, which gradually became honed back to this pure 'pill' shape. Each piece of alabaster is different so the diffused light has infinite variety, and the eye finds that so much easier to accept. It's like looking at clouds; nobody wants to stare straight at the sun.

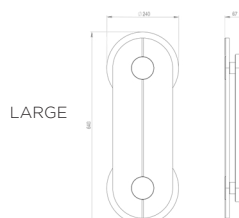


SATIN BRASS

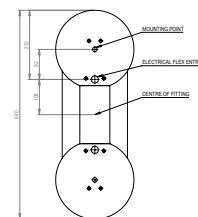
SATIN NICKEL



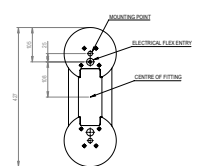
SMALL



LARGE



BRACE WALL LARGE



BRACE WALL SMALL

WALL PLATE