

Assembly guide

Lamp, Ball, white
Gb0120

Technical Data: -

Supply voltage: - 230 V AC, 50Hz

Rating: - E-27 lamp holder


Max 1x40 W 230V AC 50Hz IP-20 

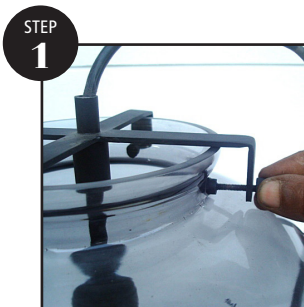
Warning:

A: Always call a professional/qualified electrician for installation of the lamp.

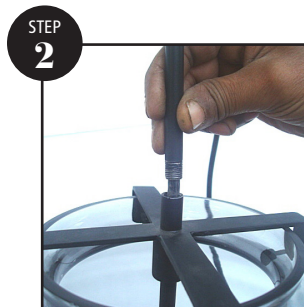
B: Switch OFF the main electric supply before starting installation/wiring of the hanging lamp.

Maintain interior cleaning with a dry cloth duster. Do not use abrasive or solvent. Avoid the use of liquid on all electrical parts.

 This means that the product can be installed at a normal flammable material surface.



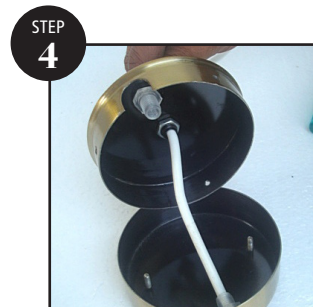
Pls take out all parts from packing, put metal frame on glass and tight side screw of all 4 arms with glass neck and fix it.



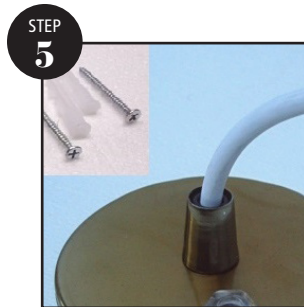
Now tight the metal pipe with central colom of metal fitting and hang this lamp with wall plate as per below instruction



Wall plate attached with lamp shade.



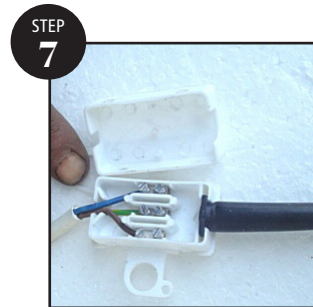
Unscrew this plate from the screws shown with the help of a screwdriver.



Fix the upper part of the wall plate to the wall box with the help of screws.



Lower part of wall plate



Fix the wall cover plate and secure it with the help of screws. Make sure the holes on the upper and lower part are aligned.



house doctor